

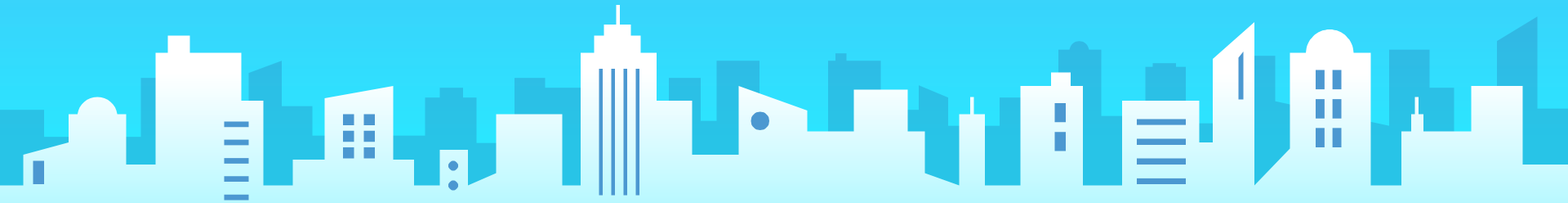
Climate Resiliency and Sustainability in our Communities

Presentation by:

Angela Dittrich – Youth Environmental Activist

Climate Resiliency and Sustainability in our Communities

Angela Dittrich



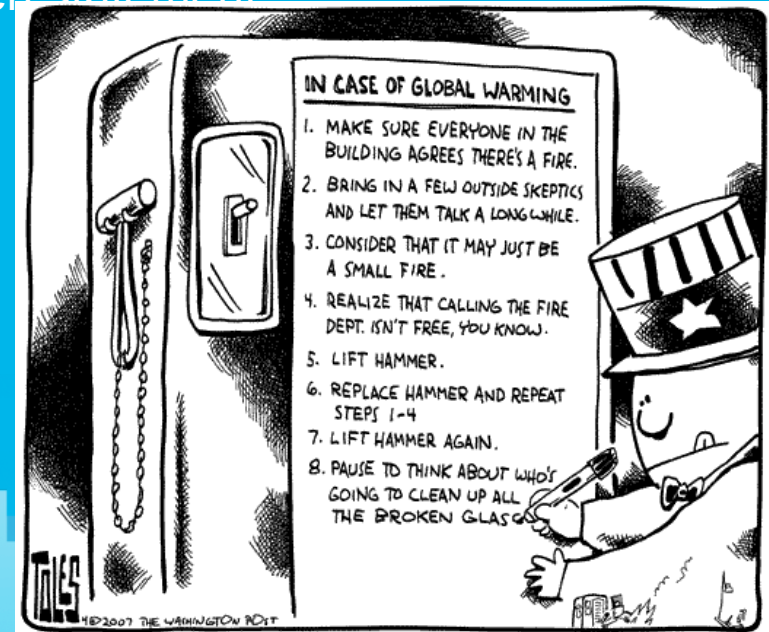
What is a Climate Emergency?

- Over 466 Climate Emergencies have been declared across Canada since 2018
 - These range from school boards, to municipalities, to the Canadian House of Commons
- Climate Emergencies typically focus on setting targets for reducing GHG emissions, but they should be far broader!



The misconceptions about the Climate Emergency

1. Climate Emergency only equals climate action
2. The Climate Emergency can be a token statement
3. The Climate Emergency isn't urgent



An important factor in tackling the climate crisis is *resiliency*

“Climate resilience is the ability to anticipate, prepare for, and respond to hazardous events, trends, or disturbances related to climate. Improving climate resilience involves assessing how climate change will create new, or alter current, climate-related risks, and taking steps to better cope with these risks.” -

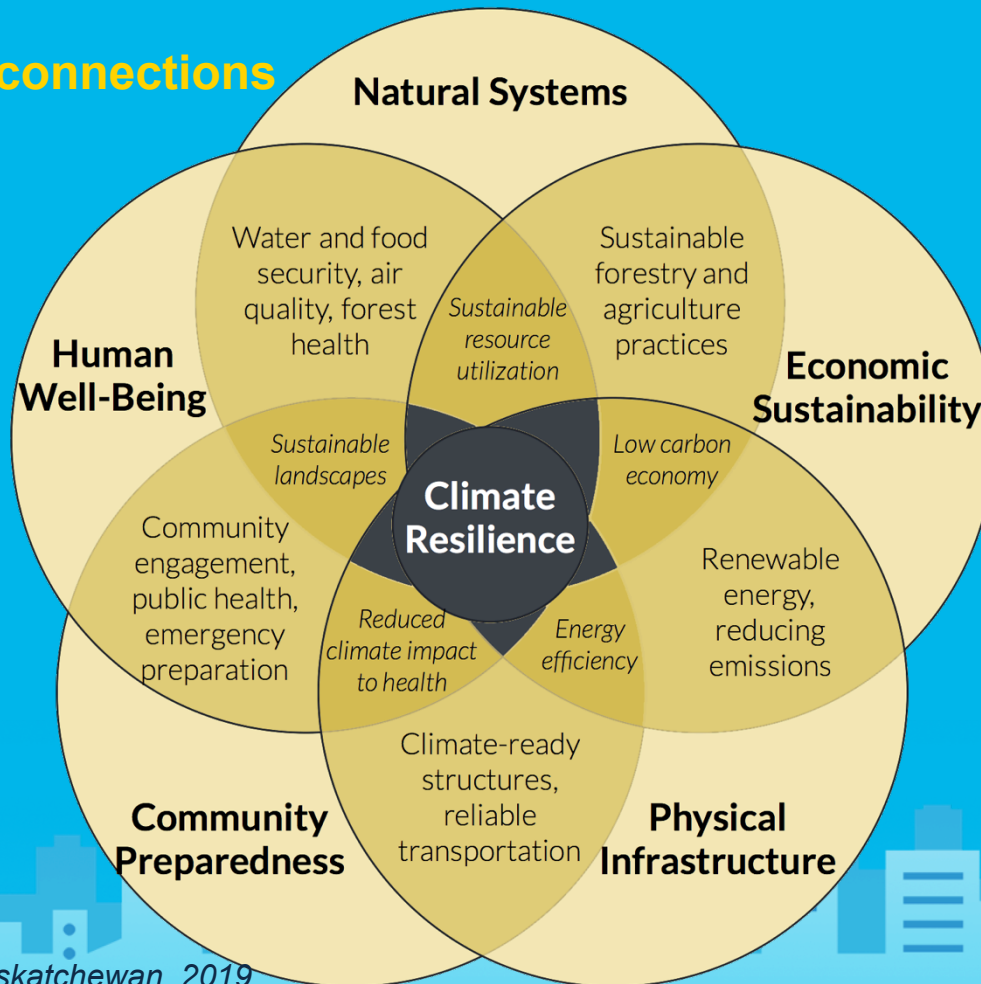
Centre for Climate and Energy Solutions

“The capacity of a community, business, or natural environment to prevent, withstand, respond to, and recover from a disruption.”

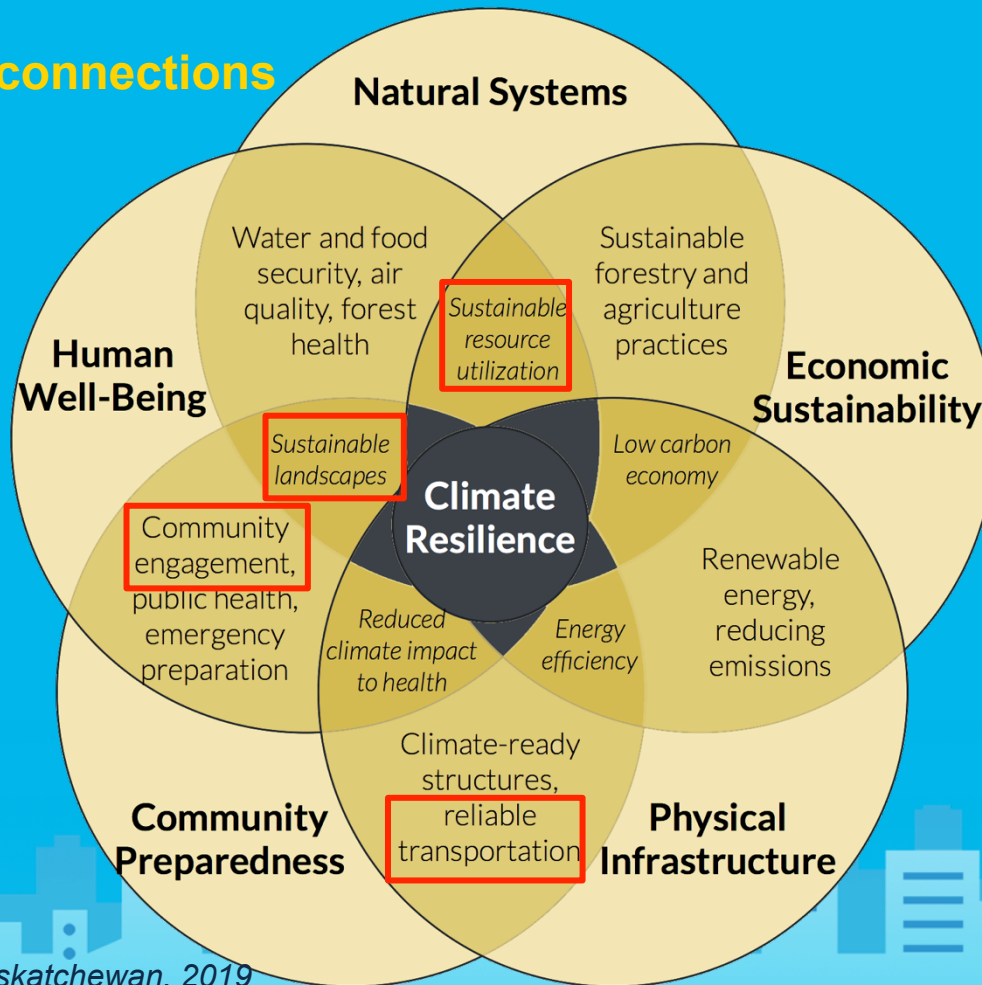
- *National Oceanic and Atmospheric Administration*



Climate resiliency connections



Climate resiliency connections



Urban planning plays a vital role in climate resiliency



Hamilton has a lot of work to do...

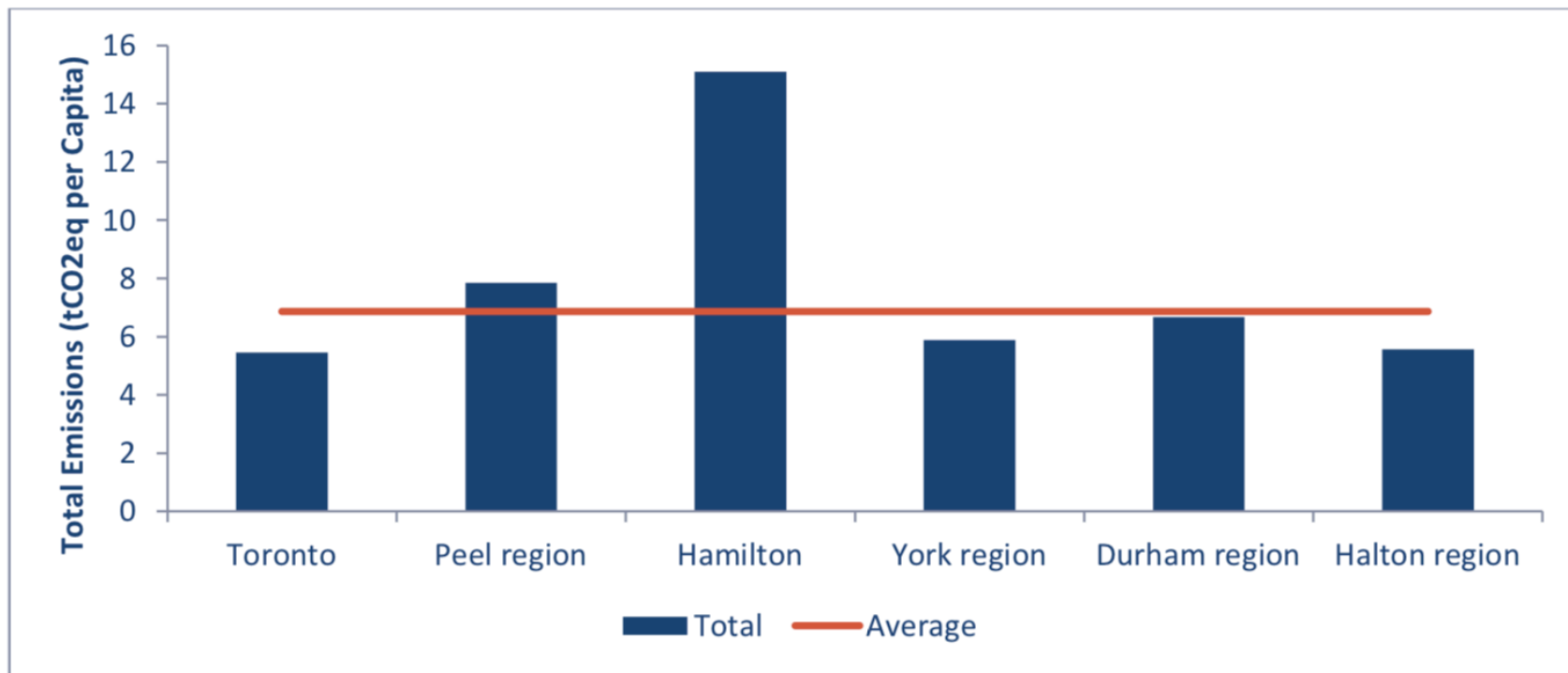


Figure 4 - Municipal Emissions per Capita

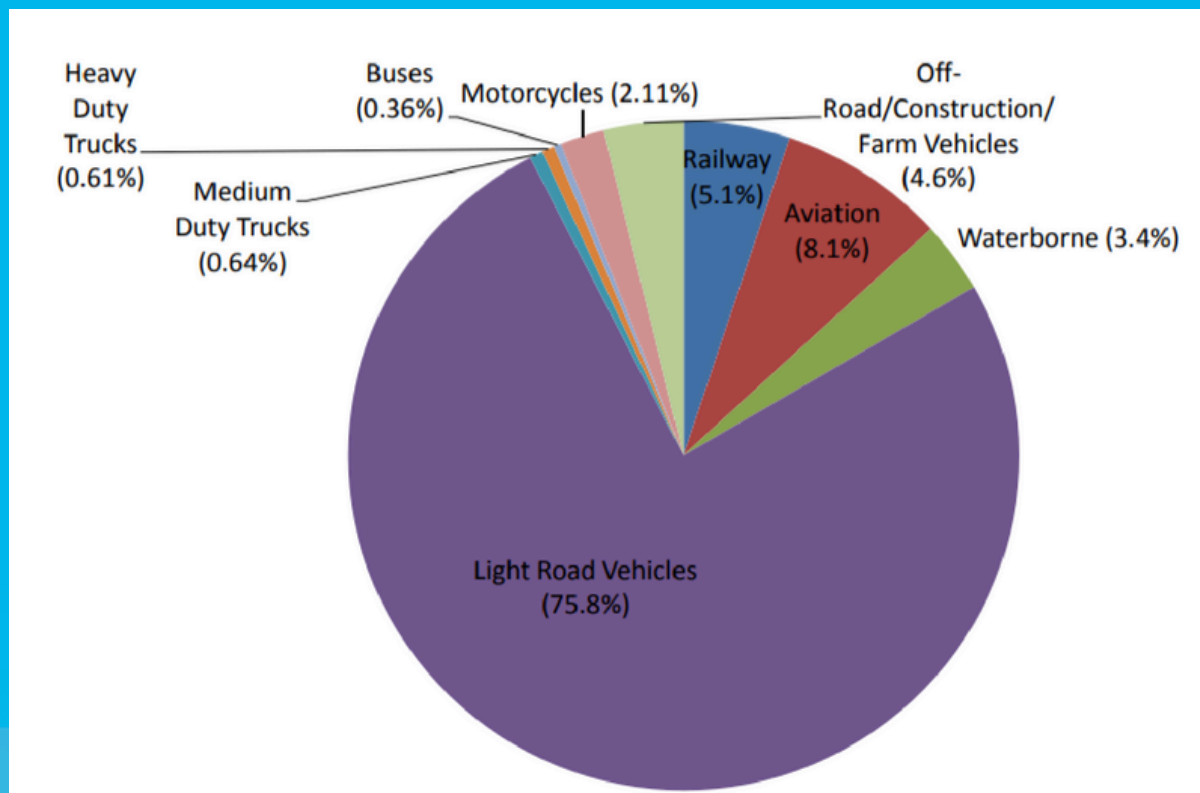
Transportation is the only sector with rising GHG emissions

Table 1.0: 2012-2015 GHG Reductions for each Sector Compared to 2006 Levels

Year	2012	2013	2014	2015
Solid Waste Reduction	92.8%	93.4%	93.0%	93.5%
Water Reduction	51.6%	36.2%	42.0%	45.3%
Steel Industry Reduction	26.9%	26.9%	27.5%	30.9%
Industrial Energy Reduction	29.9%	22.3%	13.5%	17.1%
Residential Energy Reduction	11.7%	11.0%	0.5%	11.7%
Commercial Energy Reduction	16.3%	8.4%	+3.2%	7.1%
Agriculture Reduction	2.8%	2.8%	2.8%	2.8%
Transportation Reduction	+6.5%	+3.7%	+5.2%	+9.6%

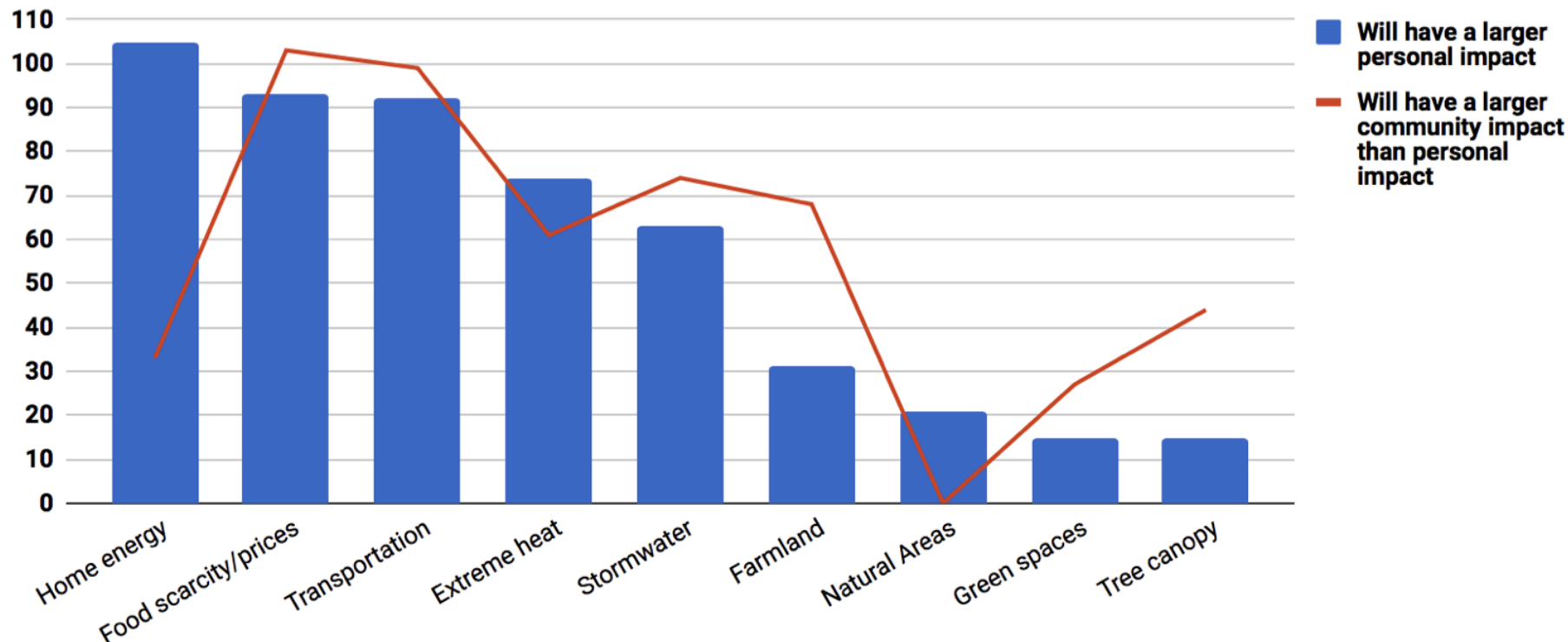
+ indicates increased emissions compared to 2006 levels

Light road vehicles are contributing the most to GHG emissions



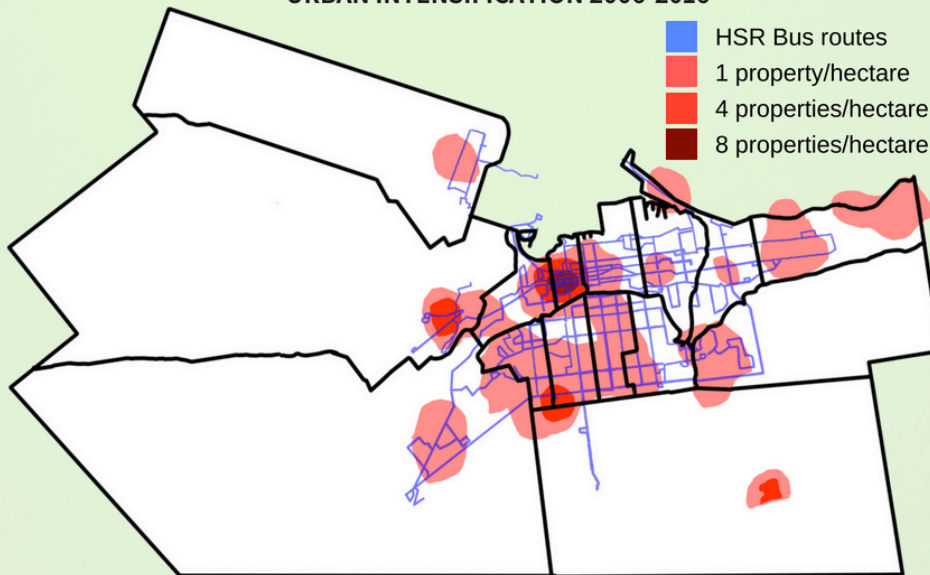
Hamiltonians are concerned about transportation options

The local issues with the largest estimated personal and community impacts



OUR CITY IS GROWING, BUT TRANSIT ISN'T KEEPING UP.

URBAN INTENSIFICATION 2006-2016

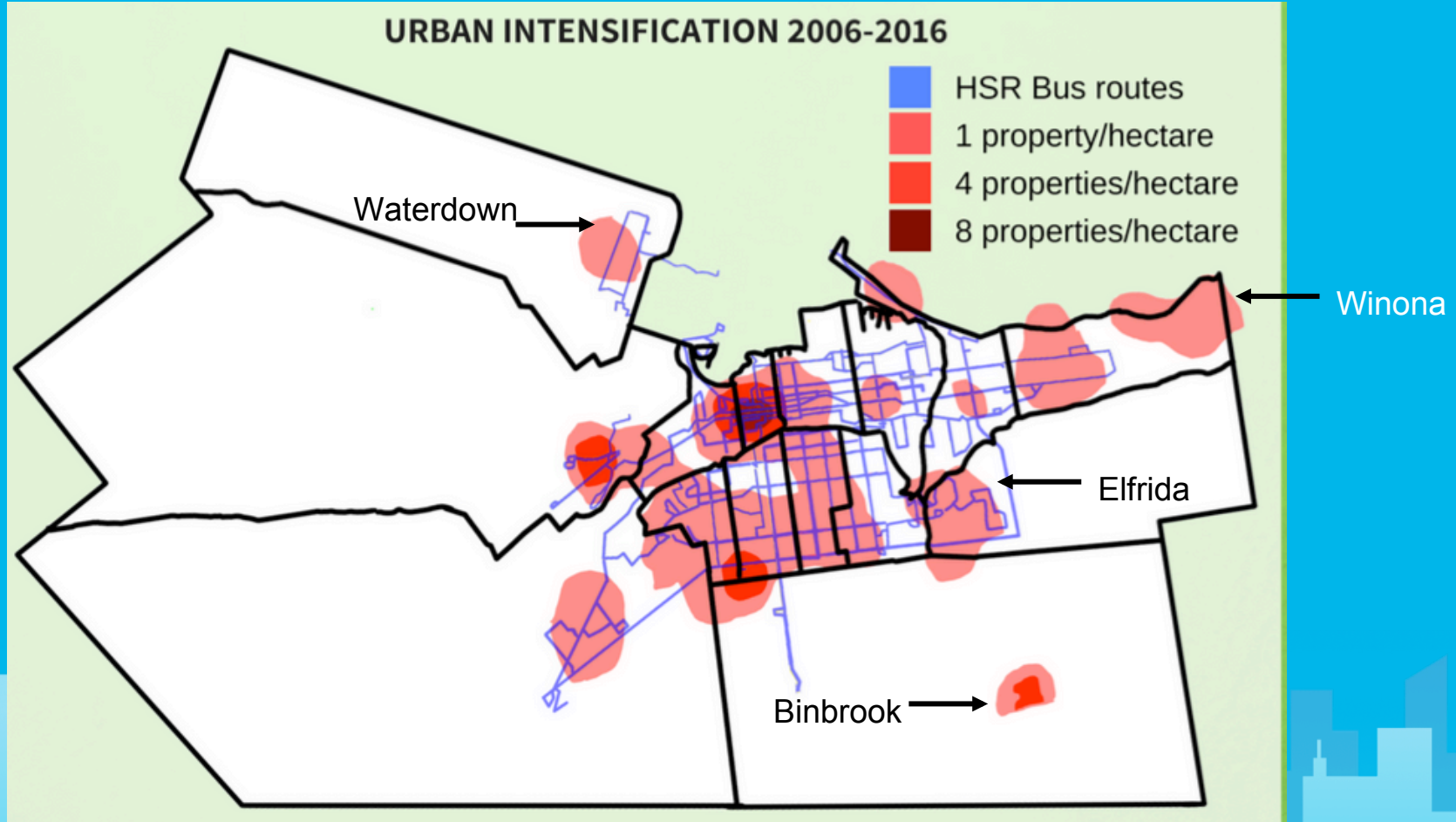


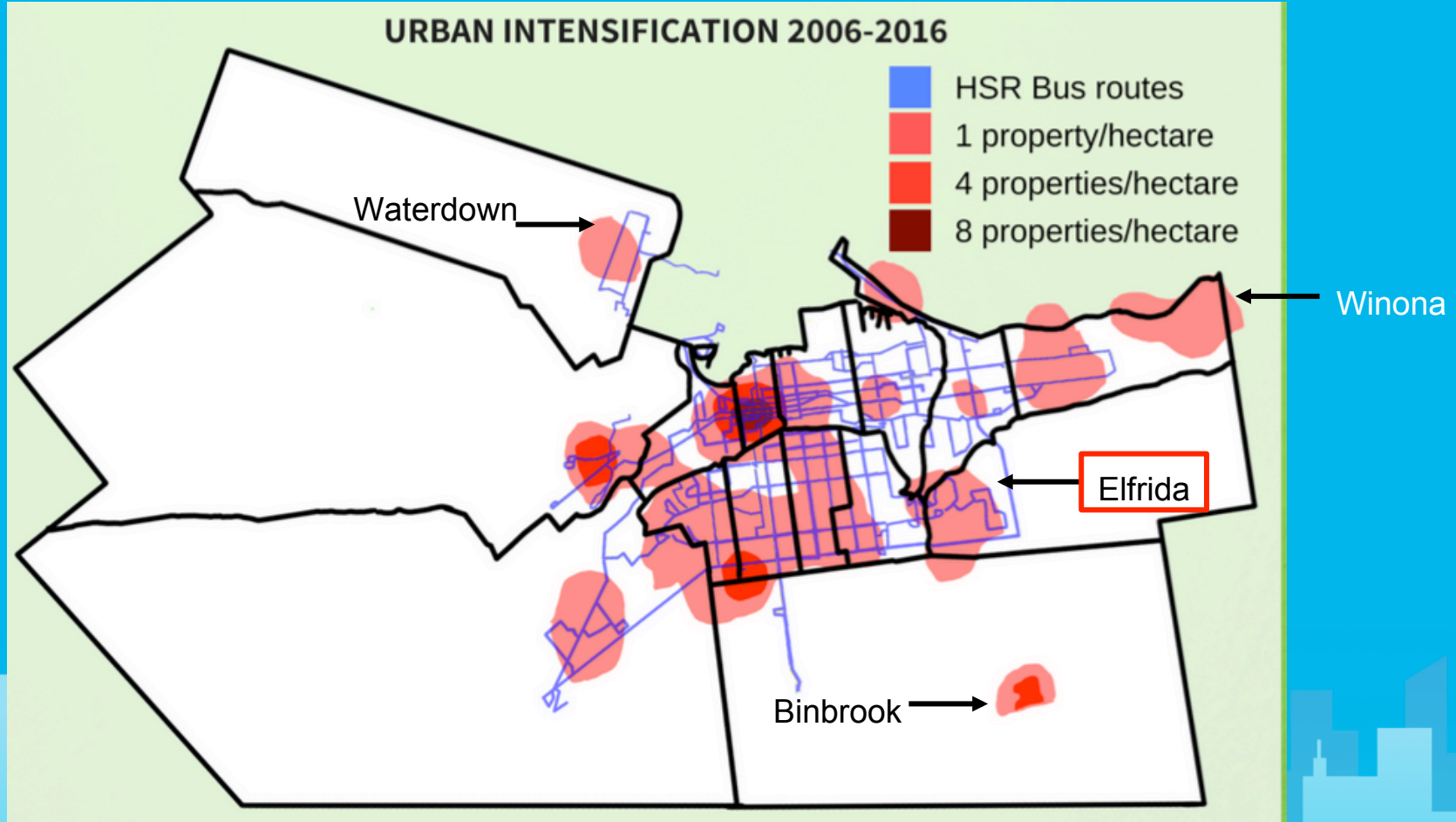
EVERYONE DESERVES TRANSIT.



Want better transit for all? Eliminate area-rating.

More information at www.environmenthamilton.org





The Elfrida expansion plan (2018)

Hamilton looks to develop a vision for an urbanized Elfrida

Community to be transformed with 80,000 people and jobs

NEWS

Jun 25, 2018

by Mike Pearson

Hamilton Community News

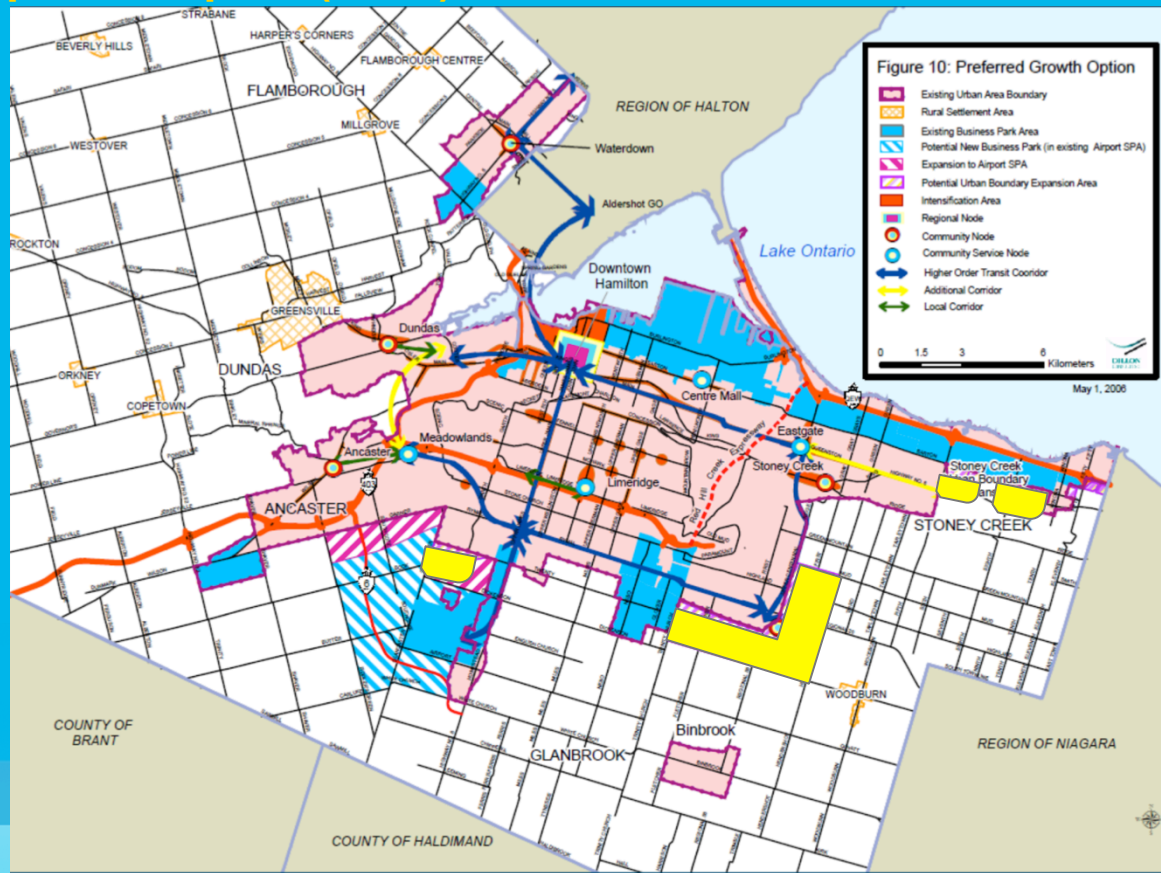


The City of Hamilton is forging ahead with a plan to transform Elfrida into a community of 80,000 workers and residents over the next two decades.

The latest in a series of public meetings for the Elfrida growth area study was held June 12 at the Valley Park Community Centre.

The study encompasses a roughly 1,000-hectare, L-shaped land parcel east and south of the intersection of Upper Centennial Parkway and Rymal Road.

The Elfrida expansion plan (2019)

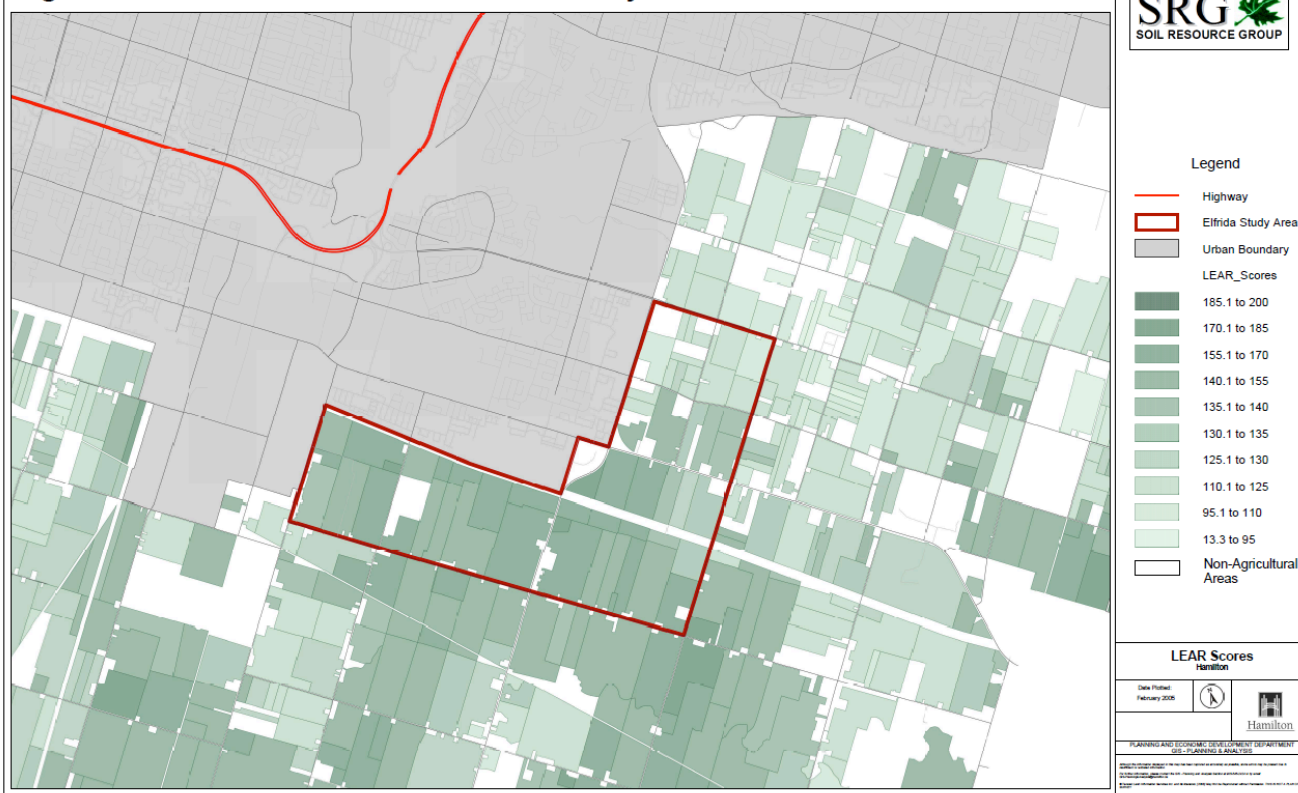


Natural land is NOT 'free' or 'unused' land



Elfrida is home to prime agricultural land

Figure 1. Distribution of LEAR scores in the study area

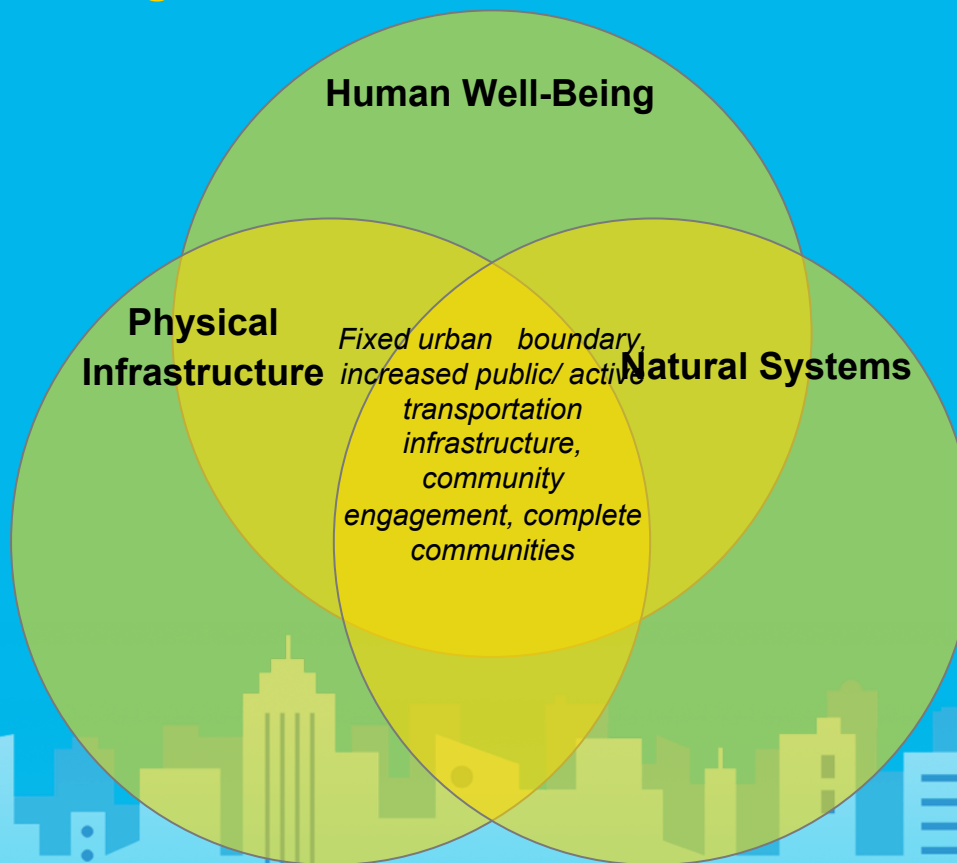


The 'Missing Middle' fosters complete communities

- Results in more efficient, gentle intensification
- Creates walkable, bikeable communities; allows for transit hubs
- Creates more resilient, lower-emission, complete communities



Climate resilience strategies in Hamilton



Next steps

- Ensuring the Climate Emergency is taken seriously in all sectors
- Creating a climate resiliency plan, considering intersections
- Improving public and active transportation infrastructure throughout the city
- Maintaining a fixed urban boundary, focusing on the 'missing middle' while protecting agricultural and natural land

